

INSPECTION DOCUMENT 15

Date: _____
 Registration Number: _____
 Serial Number: _____
 Total Time: _____

1. Description

- A. Inspection Document 15 gives a list of item(s), which are completed at the first 7500 hours and every 2500 hours thereafter.
- B. Inspection items are given in the sequence of the zone in which the inspection is completed. A description of the inspection, as well as the Item Code Number are supplied for cross-reference to section 5-10-01. Frequently, tasks give more information about each inspection. These tasks are found in the individual chapters of this manual.
- C. The right portion of each page gives space for the mechanic's and inspector's initials and remarks. You can use copies of these pages as a checklist while you complete the tasks in this Inspection Document.

2. General Inspection Criteria

- A. As you complete each of the inspection tasks in this Inspection Document, examine the adjacent area while access is available to find conditions that need more maintenance.
- B. If it is necessary to replace a component or to make a change to a system while you complete a task, do the task again before the system or component is returned to service.
- C. Inspection Kits are available for some Inspection Documents. They supply consumable materials used to complete the inspection item(s) given for the interval. Refer to the Model 208 Illustrated Parts Catalog, Introduction, Service Kit List to find applicable part numbers.

ITEM CODE NUMBER	TASK	ZONE	MECH	IN-SP	REMARKS
A531009	Seat Rails and Attachment Structure Detailed Inspection (SID 53-10-07) Task 53-25-00-220	231 232 233 234 251 252 253 254 255 256 257 258			
A532003	Cargo and Passenger Door Doublers Special Detailed Inspection (SID 53-20-01) Task 53-10-00-251	255 256 257 258 803 804			
A532013	Bulkheads and Stiffeners Below the Seat Rail Attachments at FS 143.00 and FS 158.00 Detailed Inspection (SID 53-20-12) Task 53-25-00-221	233 234			
*** End of Inspection Document 15 Inspection Items ***					

Task 53-10-00-251

14. Cargo and Passenger Door Doublers Special Detailed Inspection

- A. General
 - (1) This task includes the Supplemental Inspection Document (SID) requirements necessary to keep the cargo and passenger door doublers in a serviceable condition.
- B. Special Tools
 - (1) None
- C. Access
 - (1) Remove the upper and the lower passenger door interior panels. Refer to Chapter 52, Passenger Doors - Maintenance Practices.
 - (2) Remove the upper and the lower cargo door interior panels. Refer to Chapter 52, Cargo Doors - Maintenance Practices.
- D. Do a Special Detailed Inspection of the Cargo and Passenger Door Doublers.
 - (1) Do a nondestructive testing (NDT) inspection of the upper passenger frame doublers and corners for cracks. Refer to the Model 208 Nondestructive testing Manual, Part 6, Eddy Current, Cargo and Passenger Door Doublers - Description And Operation.
 - (2) Do an NDT inspection of the upper cargo frame doublers and corners for cracks. Refer to the Model 208 Nondestructive testing Manual, Part 6, Eddy Current, Cargo and Passenger Door Doublers - Description And Operation.
 - (3) If no cracks are found, restore access.
 - (4) If cracks are found, repair or replace the damaged part(s).
 - (a) For the passenger doors, refer to Chapter 52, Passenger Doors - Maintenance Practices or the Model 208 Structural Repair Manual.
 - (b) For the cargo doors, refer to Chapter 52, Cargo Doors - Maintenance Practices or the Model 208 Structural Repair Manual.
- E. Restore Access
 - (1) Install the upper and the lower cargo door interior panels. Refer to Chapter 52, Cargo Doors - Maintenance Practices.
 - (2) Install the upper and the lower passenger door interior panels. Refer to Chapter 52, Passenger Doors - Maintenance Practices.

End Task

Task 53-25-00-220

2. Seat Rails and Attachment Structure Detailed Inspection

A. General

- (1) This task includes the Supplemental Inspection Document (SID) requirements necessary to do a detailed inspection of the seat rails.

B. Special Tools

- (1) None

C. Access

- (1) Remove the pilot and the copilot's seat. Refer to Chapter 25, Flight Compartment - Maintenance Practices.
- (2) Remove floorboard access panels 231AL, 231BL, 231CL, 231DL, 232BC, 212FR, 216BC, 232AR, 232BR, 232AC, 232CR, and 232DR. Refer to Chapter 6, Access Plates and Panels - Description and Operation.
- (3) Remove the passenger seats and floor covering. Refer to Chapter 25, Passenger Seats - Maintenance Practices.
- (4) Remove necessary floor panels adjacent to passenger seat rails to examine structure beneath the passenger seat rails for cracks. Refer to Chapter 6, Access Plates and Panels - Description and Operation.

D. Examine the Pilot and Copilot's Seat Rails and Attachment Structure.

- (1) Do a visual inspection of the pilot and copilot's seat rails for cracks or holes that are stretched more than 0.21 inch (5.33 mm).
 - (a) If any of the seat rails have cracks or holes that are stretched more than 0.21 inch (5.33 mm), replace the seat rails. Refer to Service Kit SK208-138 and Seat Rails - Maintenance Practices.
 - (b) If there are no cracks or holes that are stretched more than 0.21 inch (5.33 mm), continue with the inspection.
- (2) Do a visual inspection of the structure beneath the pilot and copilot's seat rails for cracks.
 - (a) If there are no cracks in the structure beneath the pilot or copilot's seat rails, restore access.
 - (b) If the structure beneath the pilot and copilot's seats has cracks, repair the structure. Refer to Service Kit SK208-138 and the Model 208 Structural Repair Manual.

E. Examine the Passenger Seat Rails and Attachment Structure.

- (1) Do a visual inspection of the passenger seat rails for cracks.
 - (a) If any of the seat rails have cracks, replace the seat rails. Refer to Seat Rails - Maintenance Practices.
 - (b) If there are no cracks in the passenger seat rails, continue with the inspection.
- (2) Do a visual inspection of the structure under the passenger seat rails for cracks.
 - (a) If the structure under the passenger seats has cracks, repair the structure. Refer to the Model 208 Structural Repair Manual.
 - (b) If there are no cracks in the structure under the passenger seat rail restore access.

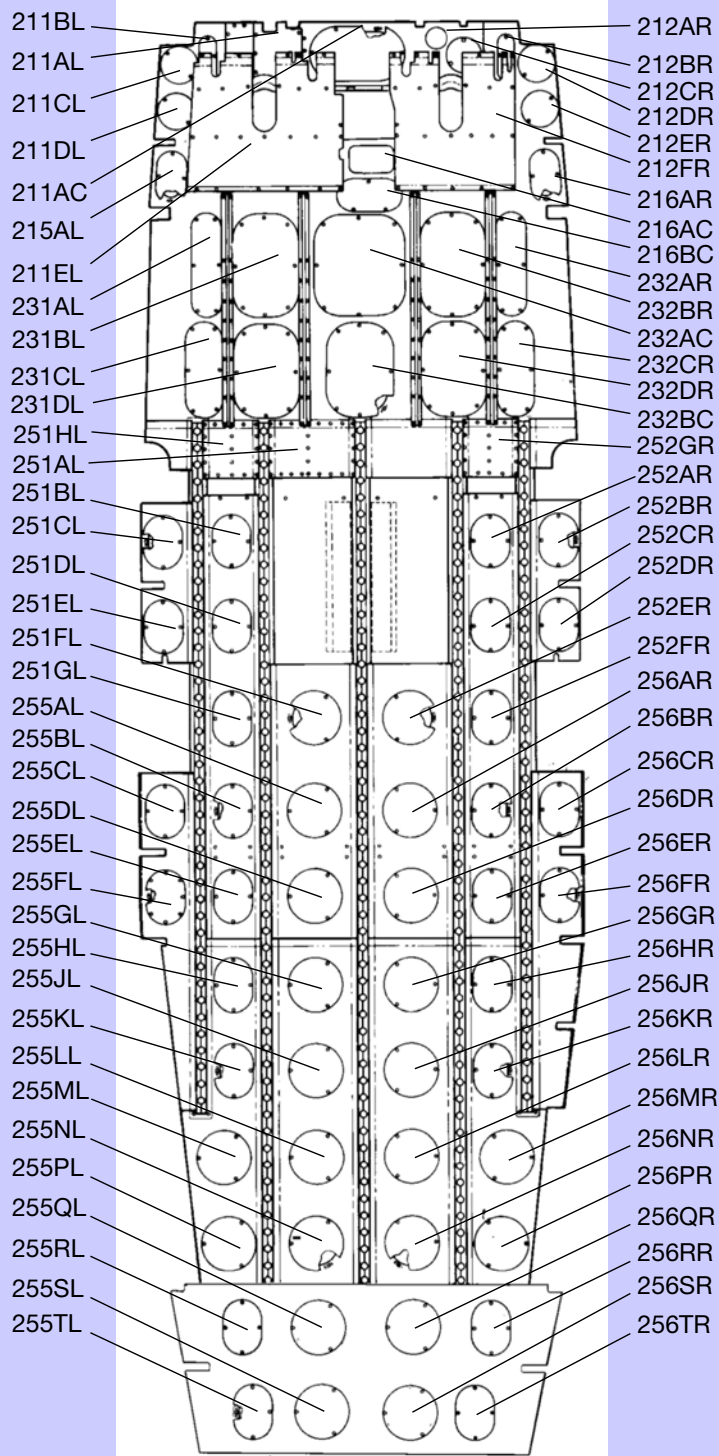
F. Restore Access

- (1) Install access panels 231AL, 231BL, 231CL, 231DL, 232BC, 212FR, 216BC, 232AR, 232BR, 232AC, 232CR, and 232DR. Refer to Chapter 6, Access Plates and Panels - Description and Operation.
- (2) Install the pilot and the copilot's seat. Refer to Chapter 25, Flight Compartment - Maintenance Practices.
- (3) Install floor panels adjacent to passenger seat rails that were removed. Refer to Chapter 6, Access Plates and Panels - Description and Operation.
- (4) Install the passenger seats and floor covering. Refer to Chapter 25, Passenger Seats - Maintenance Practices.

End Task

Figure 2. Model 208 Floorboard Access Plates/Panels Identification

A22946



MODEL 208

2611R4005
2611R3001

Sheet 1 of 1

Task 53-25-00-221

3. Bulkheads and Stiffeners Below the Seat Rail Attachments at FS 143.00 and FS 158.00 Detailed Inspection

A. General

- (1) This task includes the Supplemental Inspection Document (SID) requirements necessary to do a detailed inspection of the bulkheads and stiffeners below the seat rail attachments at FS 143.00 and FS 158.00.

B. Special Tools

- (1) None

C. Access

- (1) Remove the pilot and the copilot's seat. Refer to Chapter 25, Flight Compartment - Maintenance Practices.
- (2) Remove floorboard access panels 231CL, 231DL, 232BC, 251PL, 251AL, 252PR, 232CR, and 232DR. Refer to Chapter 6, Access Plates and Panels - Description and Operation.

D. Examine the Bulkheads and Stiffeners Below the Seat Rail Attachments.

- (1) Examine the bulkheads and stiffeners for cracks at FS 143.00 and FS 158.00.
 - (a) Do a visual inspection of the bulkheads and stiffeners for cracks.
 - (b) Do a visual inspection of the bulkhead structure near the lightening holes for cracks.
 - (c) Do a visual inspection of the bulkhead structure near the intersections with the longitudinal bulkheads for cracks.
- (2) Examine the longitudinal bulkheads and stiffeners for cracks at FS 143.00 and FS 158.00.
 - (a) Do a visual inspection of the longitudinal bulkheads and stiffeners for cracks.
 - (b) Do a visual inspection of the bulkhead structure near the lightening holes for cracks.
 - (c) Do a visual inspection of the bulkhead structure near the intersections with the longitudinal bulkheads for cracks.
- (3) If there are cracks in the bulkheads, replace the bulkheads. Refer to the Model 208 Structural Repair Manual.
- (4) If there are no cracks, restore access.

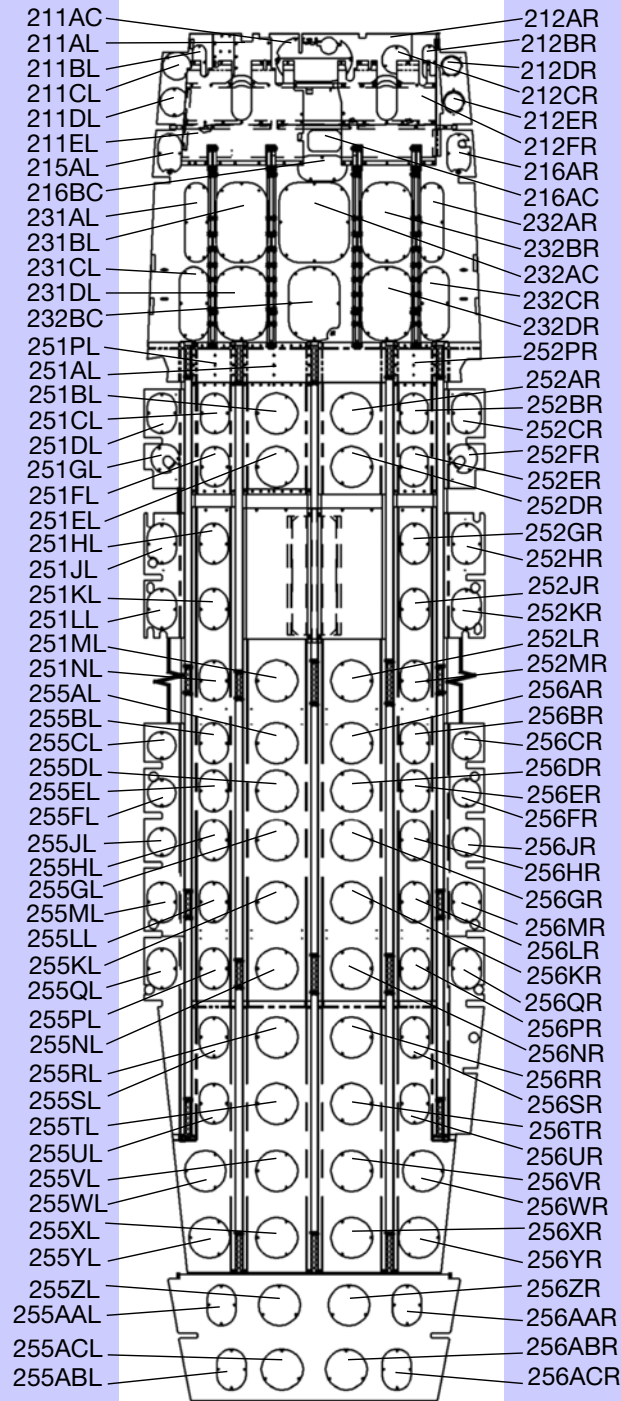
E. Restore Access

- (1) Install floorboard access panels 231CL, 231DL, 232BC, 251PL, 251AL, 252PR, 232CR, and 232DR. Refer to Chapter 6, Access Plates and Panels - Description and Operation.
- (2) Install the pilot and the copilot's seat. Refer to Chapter 25, Flight Compartment - Maintenance Practices.

End Task

Figure 5. Model 208B Passenger

A22953



MODEL 208B PASSENGER

2611R4003
2611R3008

Sheet 1 of 1