

INSPECTION DOCUMENT 12

Date:	_____
Registration Number:	_____
Serial Number:	_____
Total Time:	_____

1. Description

- A. Inspection Document 12 gives a list of item(s), which are completed at every 1600 Hours or 60 calendar months, whichever occurs first.
- B. Inspection items are given in the sequence of the zone in which the inspection is completed. A description of the inspection, as well as the Item Code Number are supplied for cross-reference to section 5-10-01. Frequently, tasks give more information about each inspection. These tasks are found in the individual chapters of this manual.
- C. The right portion of each page gives space for the mechanic's and inspector's initials and remarks. You can use copies of these pages as a checklist while you complete the tasks in this Inspection Document.

2. General Inspection Criteria

- A. As you complete each of the inspection tasks in this Inspection Document, examine the adjacent area while access is available to find conditions that need more maintenance.
- B. If it is necessary to replace a component or to make a change to a system while you complete a task, do the task again before the system or component is returned to service.
- C. Inspection Kits are available for some Inspection Documents. They supply consumable materials used to complete the inspection item(s) given for the interval. Refer to the Model 208 Illustrated Parts Catalog, Introduction, Service Kit List to find applicable part numbers.

ITEM CODE NUMBER	TASK	ZONE	MECH	IN-SP	REMARKS
C271005	Aileron Trim Tab Actuator (2661615-1, 2661615- 9, or 2661615-10) Lubrication Task 27-10-02-642	551 571 651 671			
C273003	Elevator Trim Tab Actuator (2661215-1) Lubrication Task 27-30-02-641	371 372 375 376			
*** End of Inspection Document 12 Inspection Items ***					

Task 27-10-02-642

5. Aileron Trim Tab Actuator (2661615-1, 2661615- 9, or 2661615-10) Lubrication

A. General

- (1) This task gives the procedures to do the aileron trim tab actuator (2661615-1, 2661615- 9, or 2661615-10) lubrication.

B. Special Tools

- (1) Grease

C. Access

- (1) None

D. Do the Aileron Trim Tab Actuator (2661615-1, 2661615- 9, or 2661615-10) Lubrication (Refer to Figure 202 found in Aileron Trim System - Maintenance Practices).

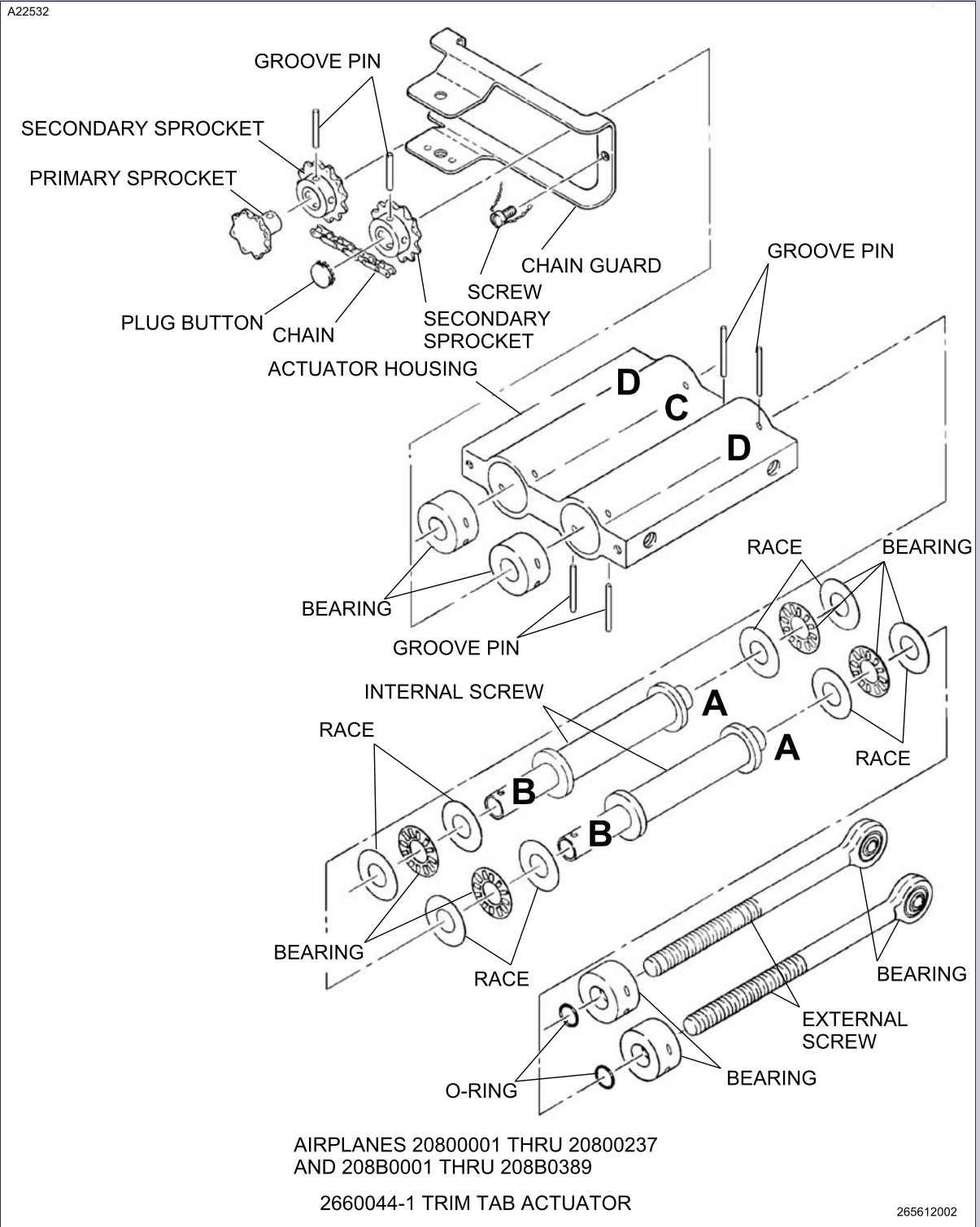
- (1) Remove the aileron trim tab actuator from the airplane and put it on a bench. Refer to Aileron Trim System - Maintenance Practices.
- (2) Disassemble the aileron trim tab actuator. Refer to Aileron Trim System - Maintenance Practices.
- (3) Do the Inspection and Repair of Aileron Trim Tab Actuator. Refer to Aileron Trim System - Maintenance Practices.
- (4) For aileron trim tab actuator (2661615-1), do the lubrication and the assembly steps found in Lubrication and Assembly of Aileron Trim Tab Actuator (Airplanes with 2661615-1 Trim Tab Actuator Installed). Refer to Aileron Trim System - Maintenance Practices.
- (5) For aileron trim tab actuators (2661615- 9 or 2661615-10), do the lubrication and the assembly steps found in Lubrication and Assembly of Aileron Trim Tab Actuator (Airplanes with 2661615- 9 or 2661615-10 Trim Tab Actuator Installed). Refer to Aileron Trim System - Maintenance Practices.
- (6) Install the aileron trim tab actuator in the airplane. Refer to Aileron Trim System - Maintenance Practices.

E. Restore Access

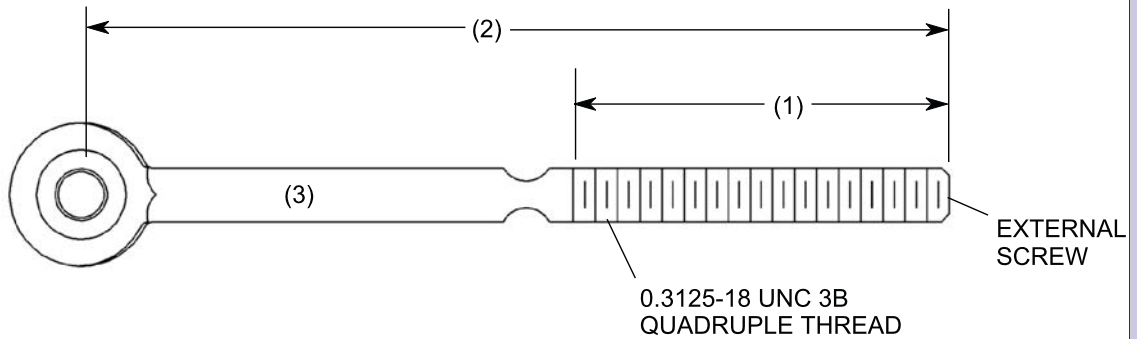
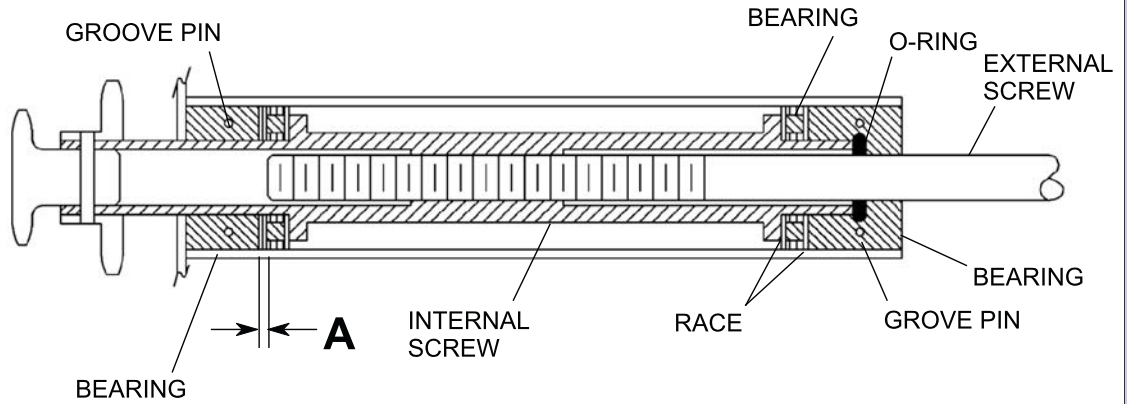
- (1) None

End Task

Figure 202. Aileron Trim Tab Actuator Disassembly/Assembly



A22533



ROD SHALL BE STRAIGHT WITHIN
 0.0003 INCH AND CONCENTRIC
 WITHIN 0.002 INCH TRUE
 INDICATOR READING.

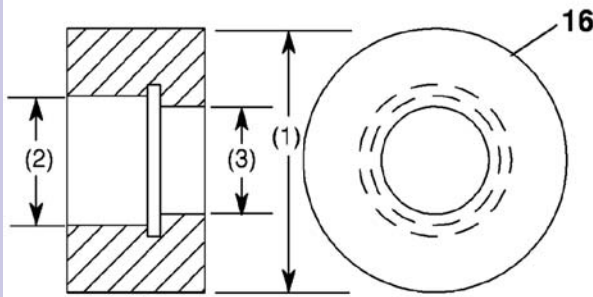
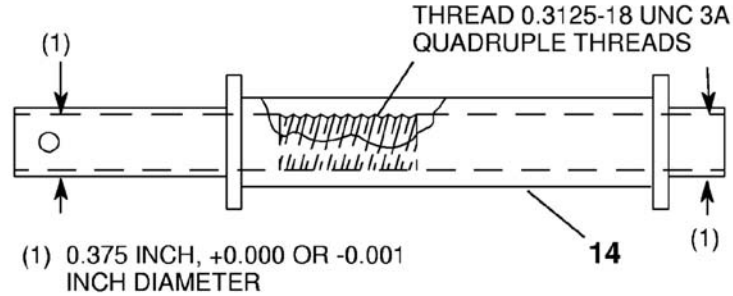
- (1) 2.100 INCHES
- (2) 4.85 INCHES
- (3) 0.3075 INCH, +0.0010 OR -0.0000 INCH DIAMETER

AIRPLANES 20800001 THRU 20800237
 AND 208B0001 THRU 208B0389

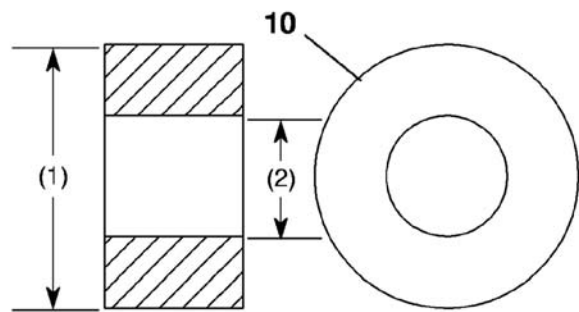
2660044-1 TRIM TAB ACTUATOR

5596T1007
 5596T1022

A22535

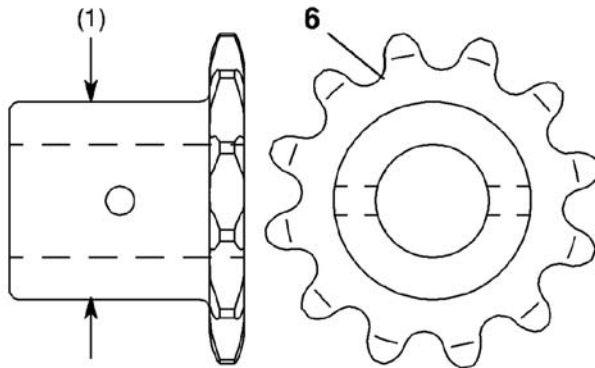


- (1) 0.828 INCH, +0.000 OR -0.001
INCH DIAMETER (NOTE)
- (2) 0.383 INCH, +0.001 OR -0.001
INCH DIAMETER (NOTE)
- (3) 0.311 INCH, +0.001 OR -0.000
INCH DIAMETER (NOTE)

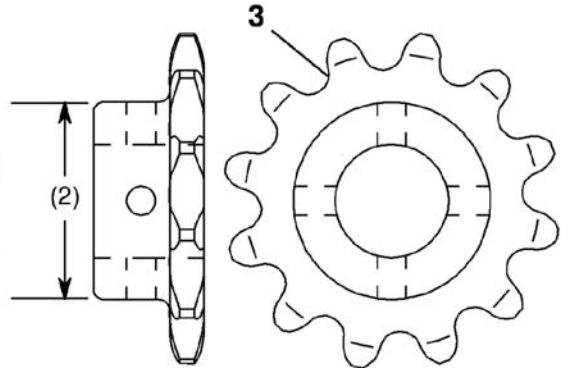


- (1) 0.828 INCH, +0.000 OR -0.001
INCH DIAMETER
- (2) 0.383 INCH, +0.001 OR -0.001
INCH DIAMETER

NOTE: (1) SHALL BE CONCENTRIC TO (2) AND (3) WITHIN
0.002 INCH TOTAL INDICATOR READING.



- (1) 0.327 INCH, +0.000 OR -0.002
INCH DIAMETER

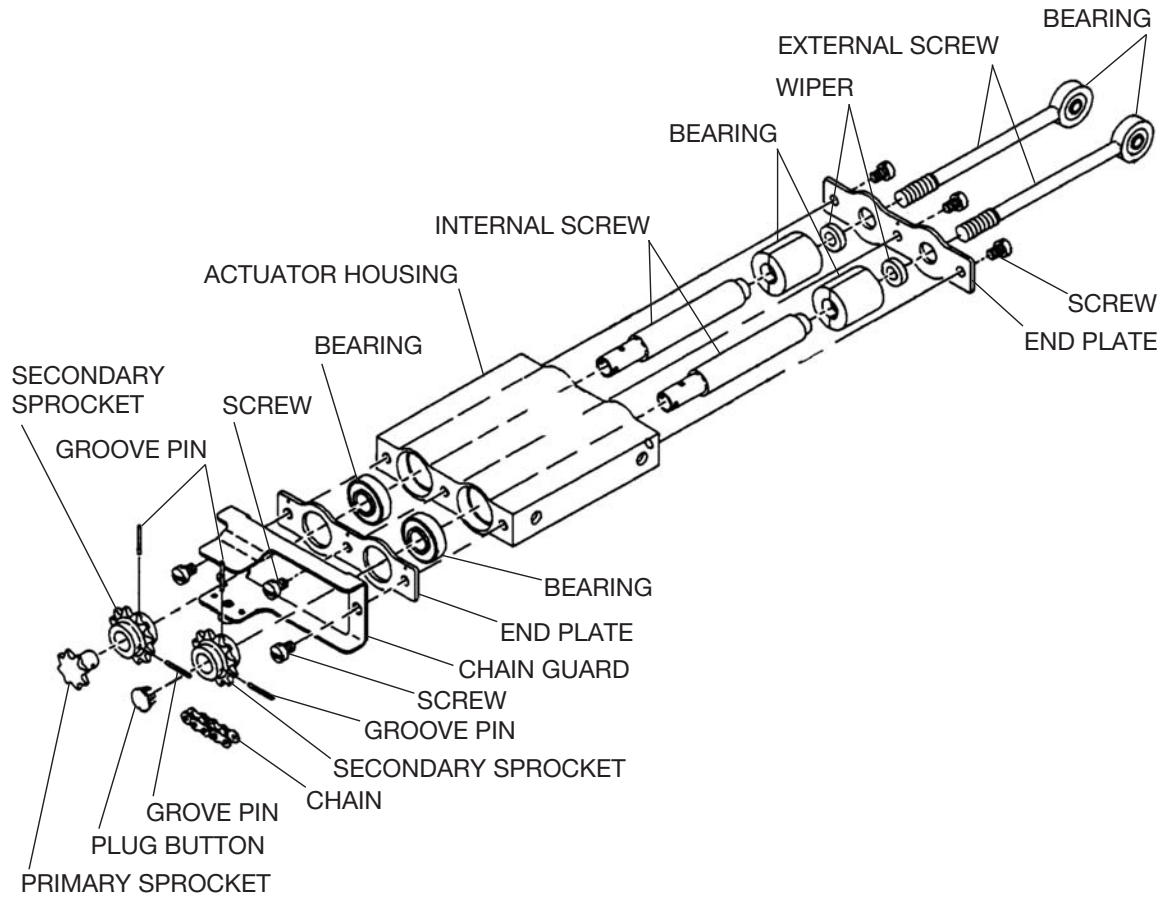


- (2) 0.3775 INCH, +0.000 OR -0.000
INCH DIAMETER

AIRPLANES 20800001 THRU 20800237
AND 208B0001 THRU 208B0389
2660044-1 TRIM TAB ACTUATOR

5596C1009
5596C1006
5596C1006
5596C1021
5596C1021

A22536



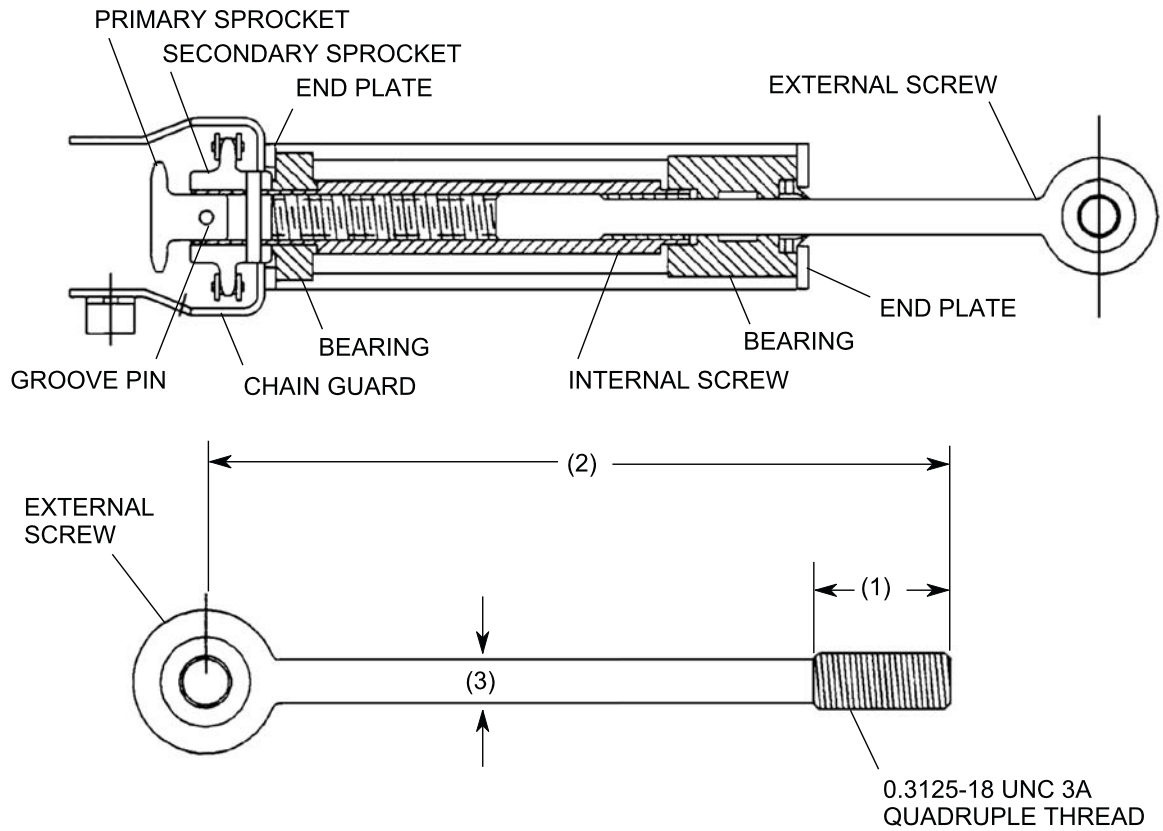
AIRPLANES 20800238 THRU 20800376
AND 208B0390 THRU 208B1055

2661615#1 TRIM TAB ACTUATOR

2661T1022

Sheet 4 of 9

A22537



ROD SHALL BE STRAIGHT WITHIN
 0.003 INCH AND CONCENTRIC
 WITHIN 0.002 INCH TRUE
 INDICATOR READING.

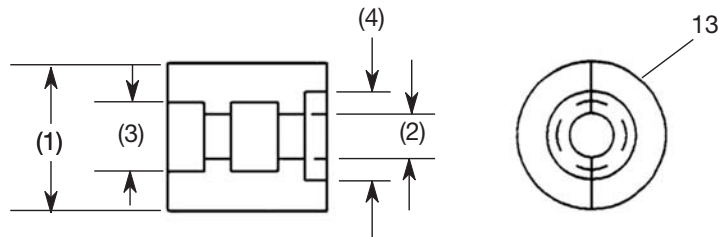
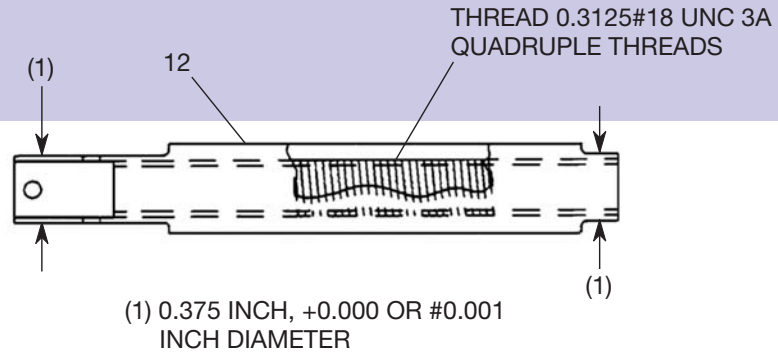
- (1) 0.75 INCH
- (2) 4.14 INCHES
- (3) 0.244 INCH, +0.001 OR -0.001 INCH DIAMETER

AIRPLANES 20800238 AND ON
 AND 208B0390 AND ON
 AND ALL SPARES

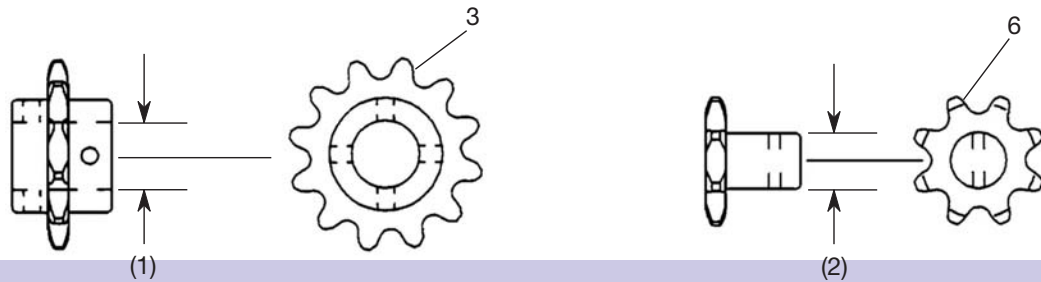
2661615-1 TRIM TAB ACTUATOR

2661T1024
 2661T1026

A22534



- (1) 0.828 INCH, +0.000 OR #0.001 INCH DIAMETER
- (2) 0.250 INCH, +0.001 OR #0.001 INCH DIAMETER
- (3) 0.385 INCH, +0.000 OR #0.000 INCH DIAMETER
- (4) 0.497 INCH, +0.000 OR #0.000 INCH DIAMETER



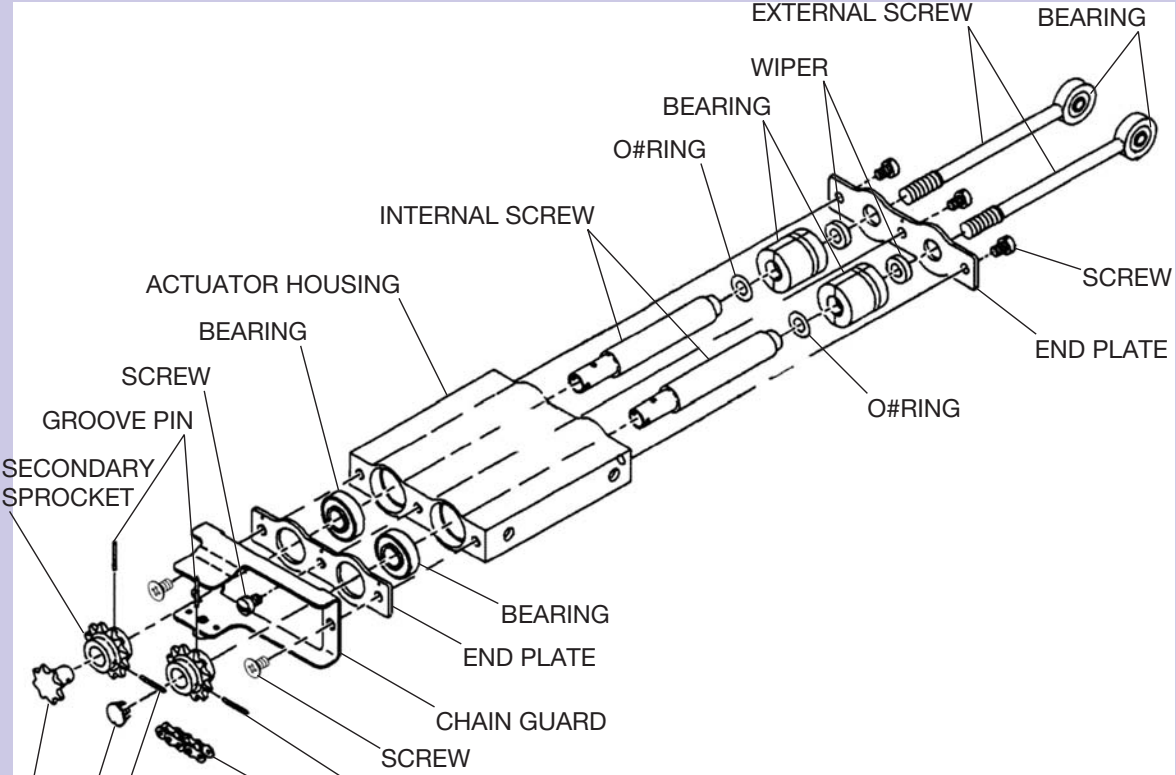
(1) 0.376 INCH, +0.001 OR #0.001
INCH DIAMETER

(2) 0.3115 INCH, +0.001 OR #0.001
INCH DIAMETER

AIRPLANES 20800238 THRU 20800376 AND
AIRPLANES 208B0390 THRU 208B1054
2661615#1 TRIM TAB ACTUATOR

2661R1025
2661R1027
2661R1028
2661R1029

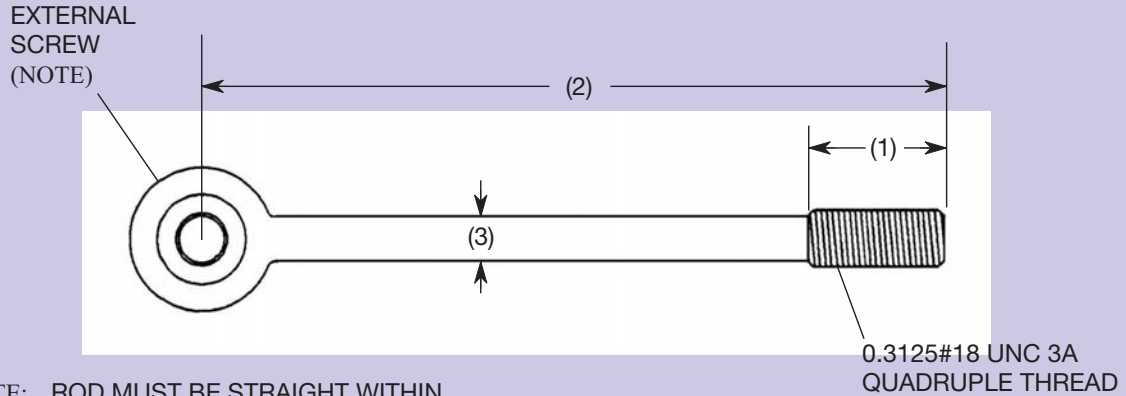
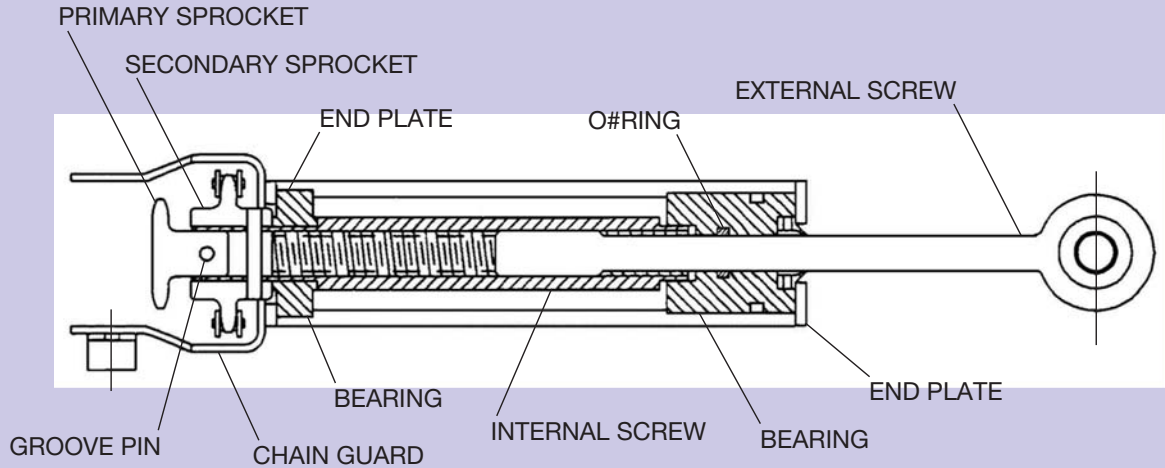
A78503



AIRPLANES 20800377 AND ON AND
AIRPLANES 208B1055 AND ON

2624R1007

A78504



NOTE: ROD MUST BE STRAIGHT WITHIN 0.003 INCH (0.076 mm) AND CONCENTRIC WITHIN 0.002 INCH (0.051 mm) TRUE INDICATOR READING.

(1) 0.75 INCH (19.05 mm)

(2) 4.14 INCHES (105.16 mm)

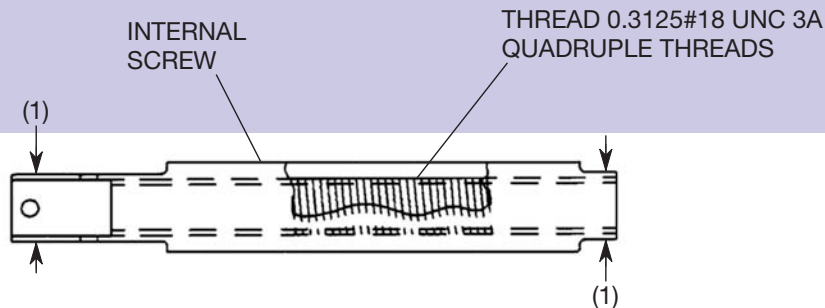
(3) 0.244 INCH, +0.001 OR #0.001 INCH (6.20 mm, +0.025 OR #0.025 mm) DIAMETER

AIRPLANES 20800377 AND ON AND
AIRPLANES 208B1055 AND ON
2661615#9 OR 2661615#10 TRIMTAB ACTUATOR

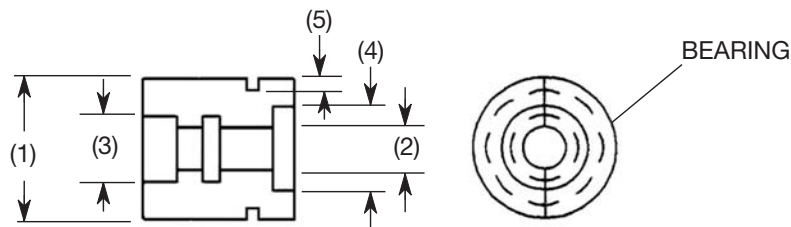
2624R1008
2661R1026

Sheet 8 of 9

A78505



(1) 0.375 INCH, +0.000 OR #0.001 INCH (9.525 mm, +0.000 OR #0.025 mm) DIAMETER



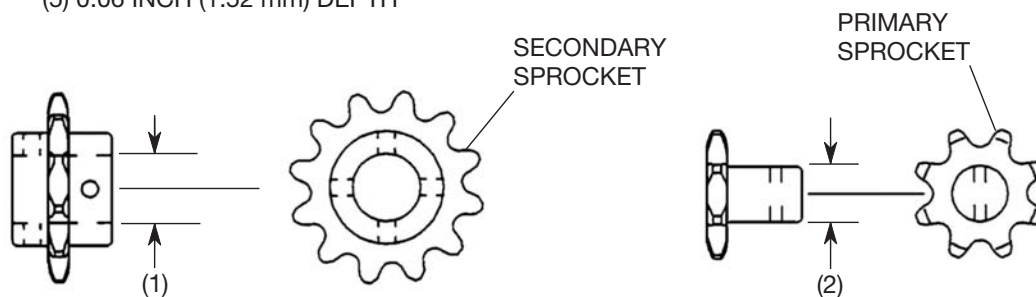
(1) 0.828 INCH, +0.000 OR #0.001 INCH (21.03 mm, +0.000 OR #0.025 mm) DIAMETER

(2) 0.250 INCH, +0.001 OR #0.001 INCH (6.35 mm, +0.025 OR #0.025 mm) DIAMETER

(3) 0.380 INCH, +0.001 OR #0.000 INCH (9.65 mm, +0.025 OR #0.000 mm) DIAMETER

(4) 0.497 INCH, +0.000 OR #0.000 INCH (12.62 mm, +0.000 OR #0.000 mm) DIAMETER

(5) 0.06 INCH (1.52 mm) DEPTH



(1) 0.376 INCH, +0.001 OR #0.001 INCH
(9.550 mm, +0.025 OR #0.025 mm) DIAMETER

(2) 0.3115 INCH, +0.001 OR #0.001 INCH
(7.912 mm, +0.025 OR #0.025 mm) DIAMETER

AIRPLANES 20800377 AND ON AND
AIRPLANES 208B1055 AND ON
2661615#9 OR 2661615#10 TRIM TAB ACTUATOR

2661R1025
2624R1009
2661R1028
2661R1029

Task 27-30-02-641

4. Elevator Trim Tab Actuator (2661215-1) Lubrication

A. General

(1) This task gives the procedures to do the elevator trim tab actuator (2661215-1) lubrication.

B. Special Tools

(1) Grease

C. Access

(1) None

D. Do the Elevator Trim Tab Actuator (2661215-1) Lubrication (Refer to Figure 202 found in Elevator Trim - Maintenance Practices).

(1) Remove the elevator trim tab actuator from the airplane and put it on a bench. Refer to Elevator Trim - Maintenance Practices.

(2) Disassemble the elevator trim tab actuator. Refer to Elevator Trim - Maintenance Practices.

(3) Do the Elevator Trim Tab Actuator Inspection/Repair. Refer to Elevator Trim - Maintenance Practices.

(4) Do the lubrication and the assembly steps found in Elevator Trim Tab Actuator Lubrication and Assembly (Airplanes with 2661215-1 Trim Tab Actuator Installed). Refer to Elevator Trim - Maintenance Practices.

(5) Install the elevator trim tab actuator in the airplane. Refer to Elevator Trim - Maintenance Practices.

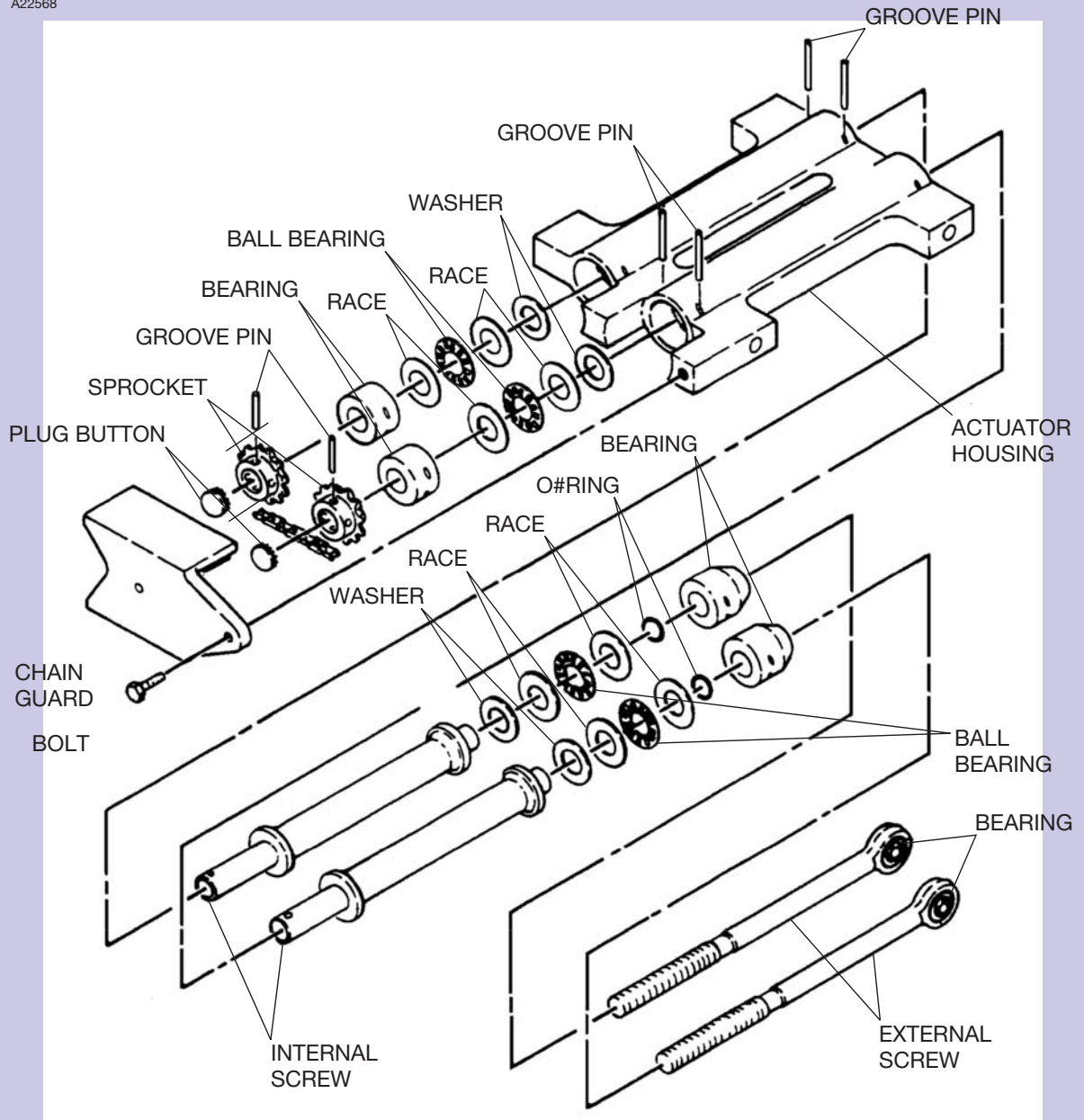
E. Restore Access

(1) None

End Task

Figure 202. Elevator Trim Tab Actuator

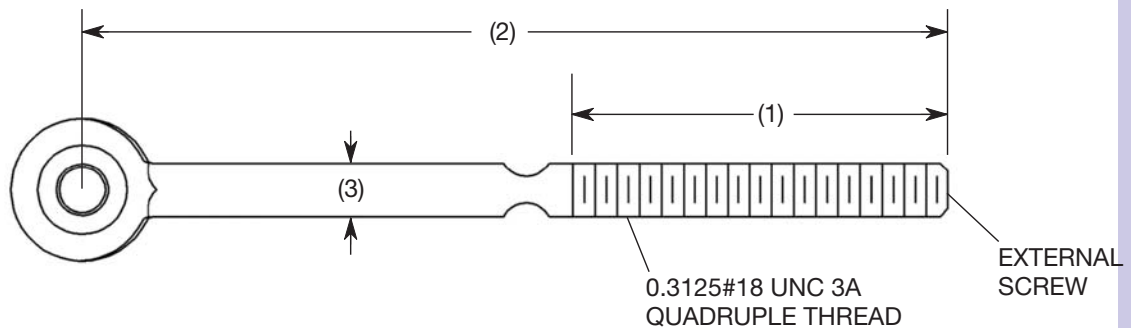
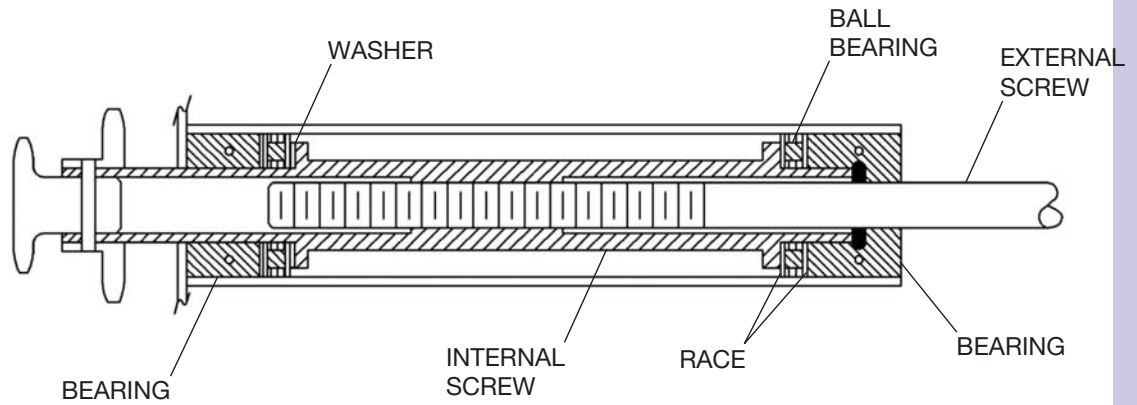
A22568



AIRPLANES 20800001 THRU 20800237 AND
AIRPLANES 208B0001 THRU 208B0389

26631001

A22559



ROD MUST BE STRAIGHT WITHIN
0.0003 INCH (0.0076 mm) AND CONCENTRIC
WITHIN 0.002 INCH (0.051 mm) TRUE
INDICATOR READING.

(1) 2.00 INCHES (50.8 mm)

(2) 5.60 INCHES (142.24 mm)

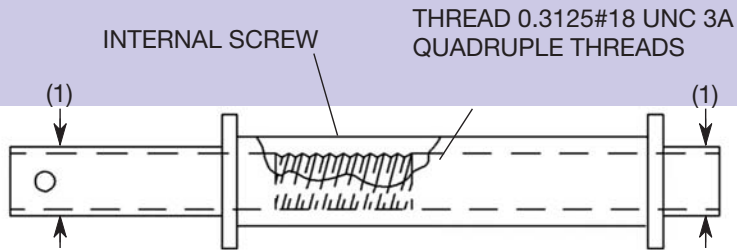
(3) 0.3075 INCH, +0.0010 OR #0.0000 INCH (7.810 mm, +0.025 OR #0.000 mm) DIAMETER

AIRPLANES 20800001 THRU 20800237 AND
AIRPLANES 208B0001 THRU 208B0389

5596C1007
5596C1022

Sheet 2 of 7

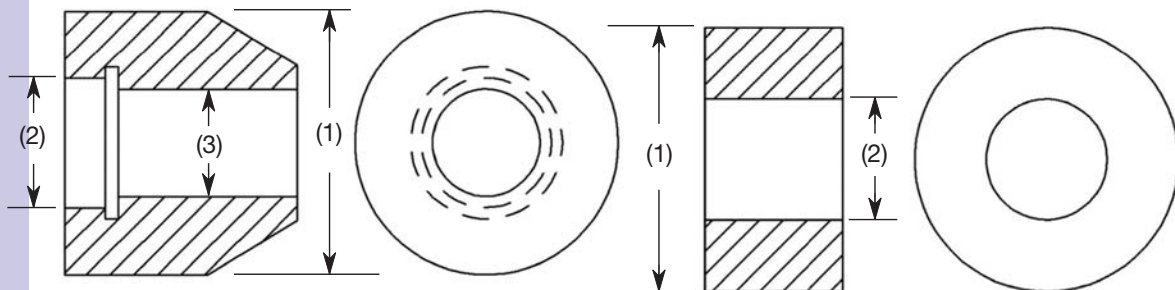
A22563



(1) 0.375 INCH, +0.000 OR #0.001 INCH (9.525 mm, +0.000 OR #0.025 mm) DIAMETER

BEARING

BEARING



(1) 0.828 INCH, +0.000 OR #0.001 INCH
(21.03 mm, +0.000 OR #0.025 mm) DIAMETER(NOTE)

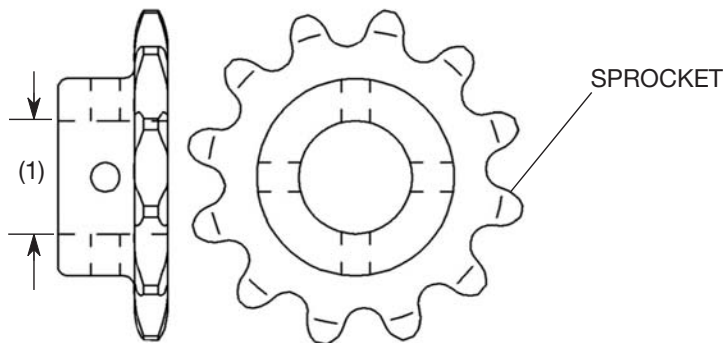
(1) 0.828 INCH, +0.000 OR #0.001 INCH
(21.03 mm, +0.000 OR #0.025 mm)
DIAMETER

(2) 0.383 INCH, +0.001 OR #0.001 INCH
(9.728 mm, +0.025 OR #0.025 mm) DIAMETER(NOTE)

(2) 0.383 INCH, +0.001 OR #0.001 INCH
(9.728 mm, +0.025 OR #0.025 mm)
DIAMETER

(3) 0.311 INCH, +0.001 OR #0.000 INCH
(7.900 mm, +0.025 OR #0.000 mm) DIAMETER(NOTE)

NOTE: (1) MUST BE CONCENTRIC TO (2) AND (3) WITHIN 0.002 INCH (0.051 mm) TOTAL INDICATOR READING.

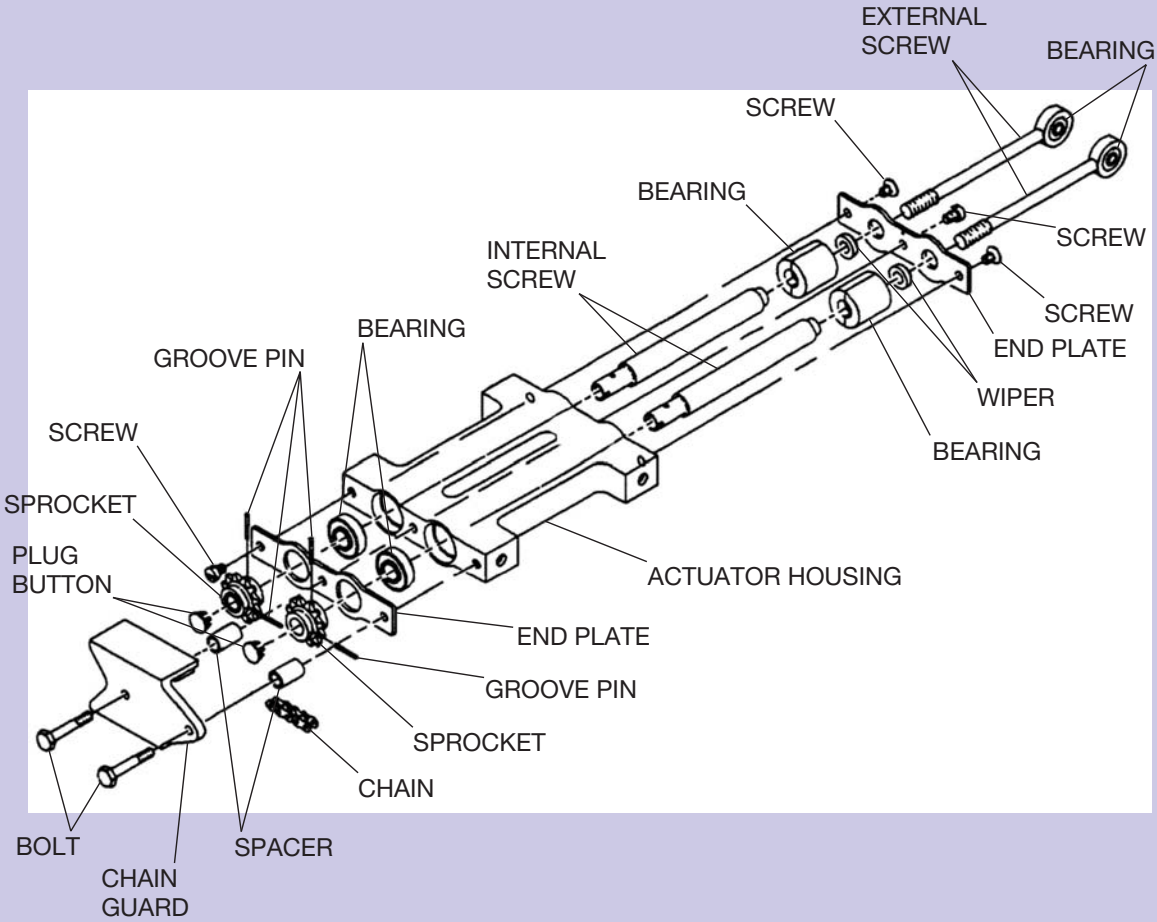


(1) 0.3775 INCH, +0.000 OR #0.000 INCH (9.588 mm, +0.000 OR #0.000 mm) DIAMETER

AIRPLANES 20800001 THRU 20800237 AND
AIRPLANES 208B0001 THRU 208B0389

5596C1009
5596C1006
5596C1006
5596C1021

A22565

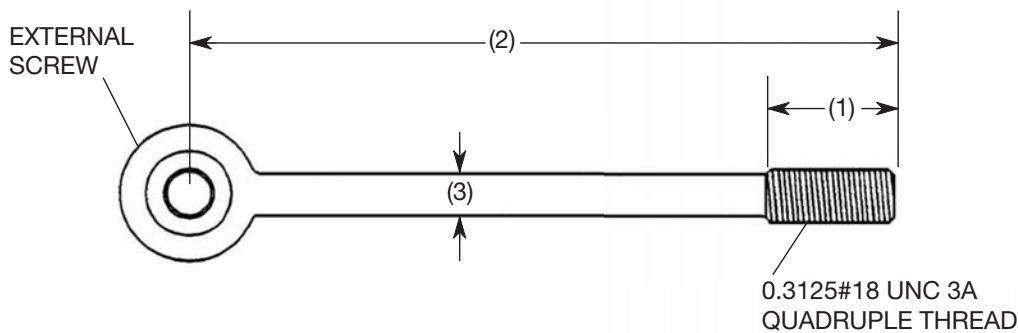
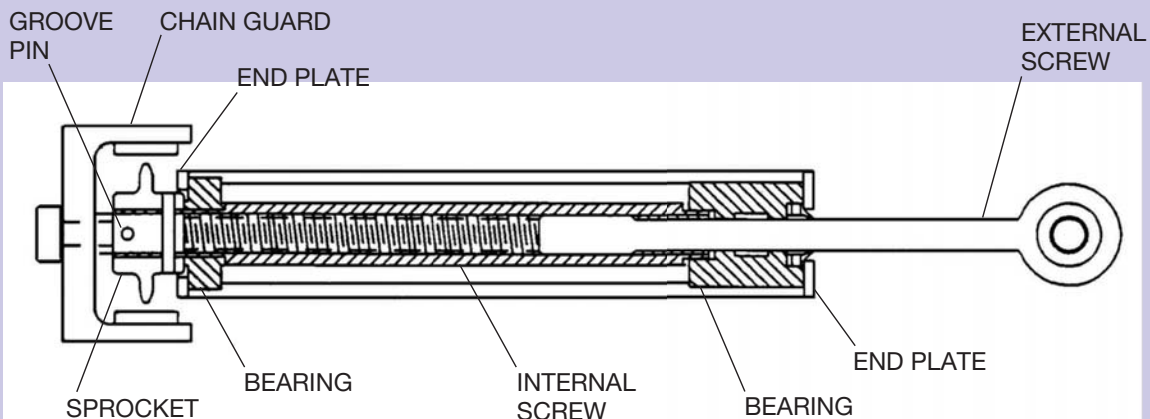


AIRPLANES 20800238 THRU 20800376 AND
AIRPLANES 208B0390 THRU 208B1055 AND
ALL SPARES

2661215#1 TRIM TAB ACTUATOR

2661R1023

A22567



ROD MUST BE STRAIGHT WITHIN
0.003 INCH (0.076 mm) AND CONCENTRIC
WITHIN 0.002 INCH (0.051 mm) TRUE
INDICATOR READING.

(1) 0.75 INCH (19.05 mm)

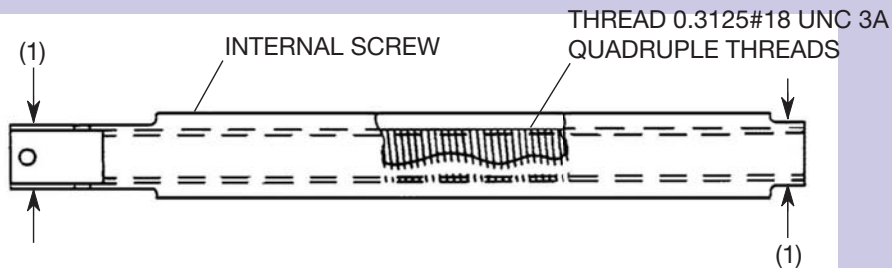
(2) 4.14 INCHES (105.16 mm)

(3) 0.244 INCH, +0.001 OR #0.001 INCH (6.20 mm, +0.025 OR #0.025 mm) DIAMETER

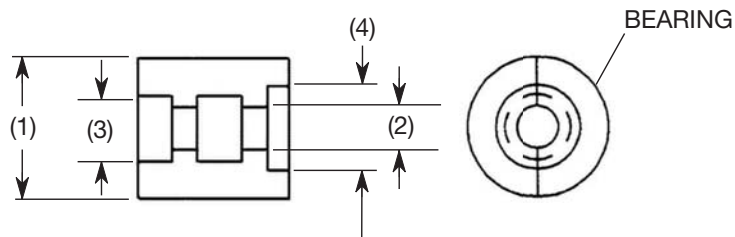
AIRPLANES 20800238 AND ON AND
AIRPLANES 208B0390 AND ON AND
ALL SPARES

2661C1030
2661C1026

A22569



(1) 0.375 INCH, +0.000 OR #0.001 INCH (9.525 mm, +0.000 OR #0.025 mm) DIAMETER

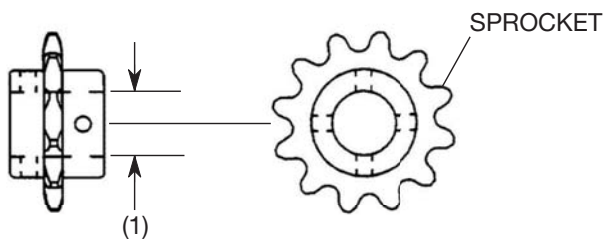


(1) 0.828 INCH, +0.000 OR #0.001 INCH (21.03 mm, +0.000 OR #0.025 mm) DIAMETER

(2) 0.250 INCH, +0.001 OR #0.001 INCH (6.35 mm, +0.025 OR #0.025 mm) DIAMETER

(3) 0.385 INCH, +0.000 OR #0.000 INCH (9.78 mm, +0.000 OR #0.000 mm) DIAMETER

(4) 0.497 INCH, +0.000 OR #0.000 INCH (12.62 mm, +0.000 OR #0.000 mm) DIAMETER

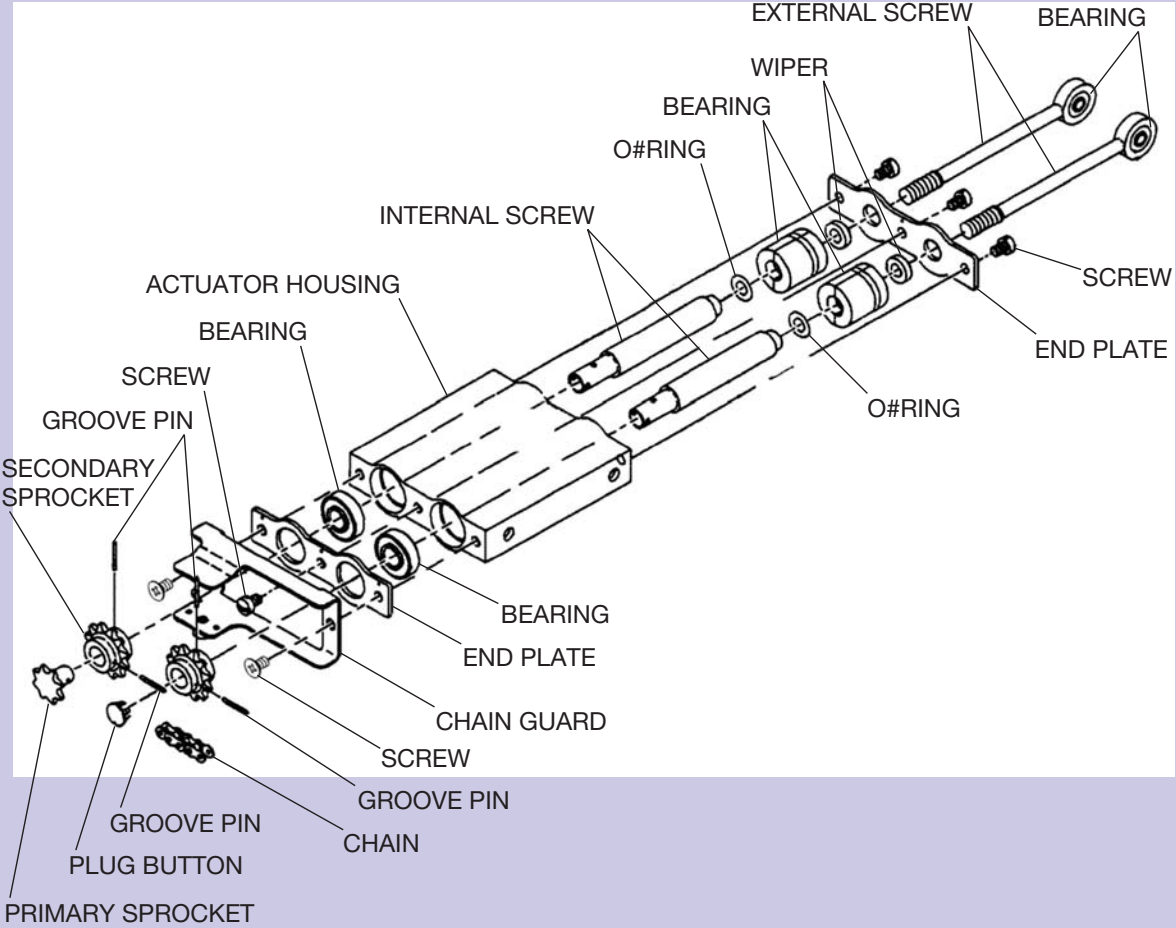


(1) 0.376 INCH, +0.001 OR #0.001 INCH (9.550 mm, +0.025 OR #0.025 mm) DIAMETER

AIRPLANES 20800238 AND ON AND
AIRPLANES 208B0390 AND ON AND
ALL SPARES

2661C1031
2661C1027
2661C1028

A78065



AIRPLANES 20800377 AND ON AND
AIRPLANES 208B1055 AND ON
2661215#9 TRIM TAB ACTUATOR

2624R1007